

Support Note

TRIMBLE GEOSPATIAL

August 2021

Trimble Office Software – Community Base Station Update for NOAA CORS Network – August 2021

NGS Decommissioning Access to Public FTP Service for RINEX Files

NGS has announced that on the 16th August 2021 public access to the FTP service which hosts NOAA CORS RINEX data will be disabled. More information about this announcement is available [here](#).

The NOAA CORS network is a common source of base file data for baseline processing workflows in Trimble Office solutions, including Trimble Business Center, Trimble GPS Pathfinder® Office, and Trimble Positions™ Desktop add-in.

The Trimble Community Base Station (CBS) list, which contains URLs for downloading RINEX data from the NOAA CORS network, has been updated to use the latest services. While the Trimble CBS list was previously updated to no longer use the FTP Service mentioned in this bulletin, we recommend customers ensure they have the latest version of the CBS list to ensure use of the NOAA CORS network is not interrupted.

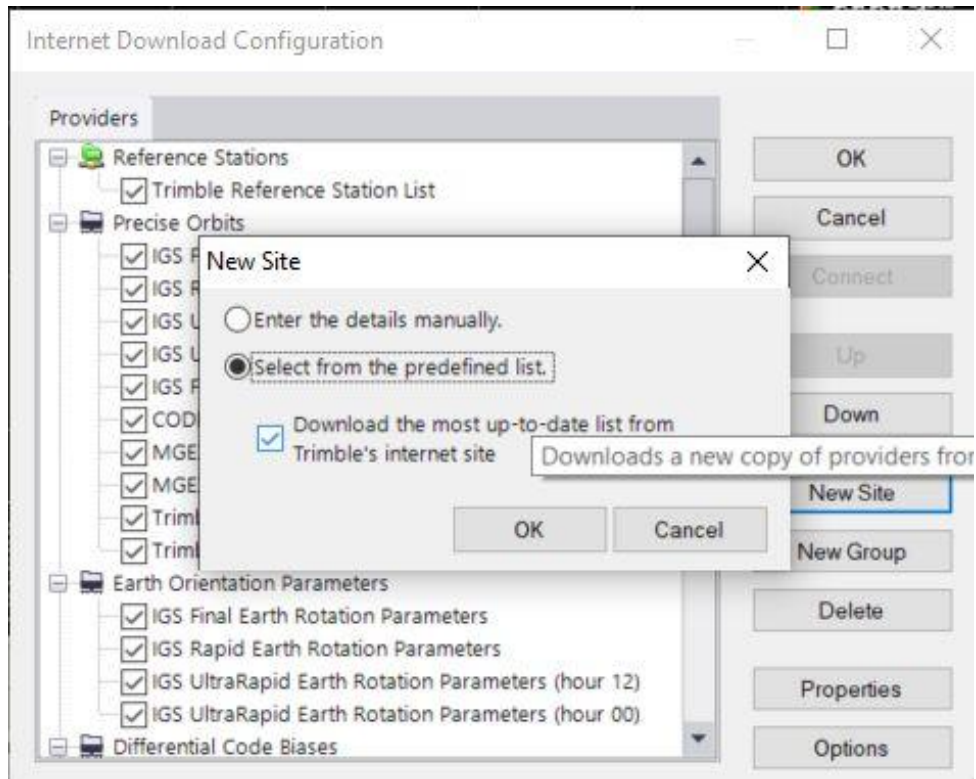
Updating the Community Base Station List

Instructions for updating the Community Base Station list in Trimble Business Center, Trimble GPS Pathfinder Office, and Trimble Positions Desktop add-in are covered below for each solution.

- **Trimble Business Center**

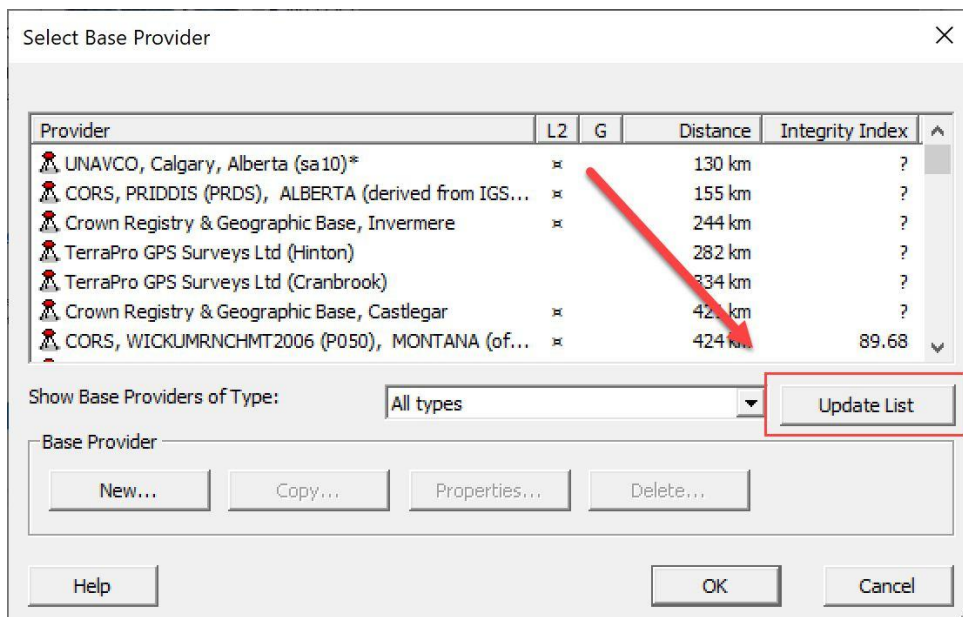
- To make sure you have the most up-to-date list, select the check-box as shown in the screen below when downloading Reference Station information under the Internet Download tool.

www.trimble.com



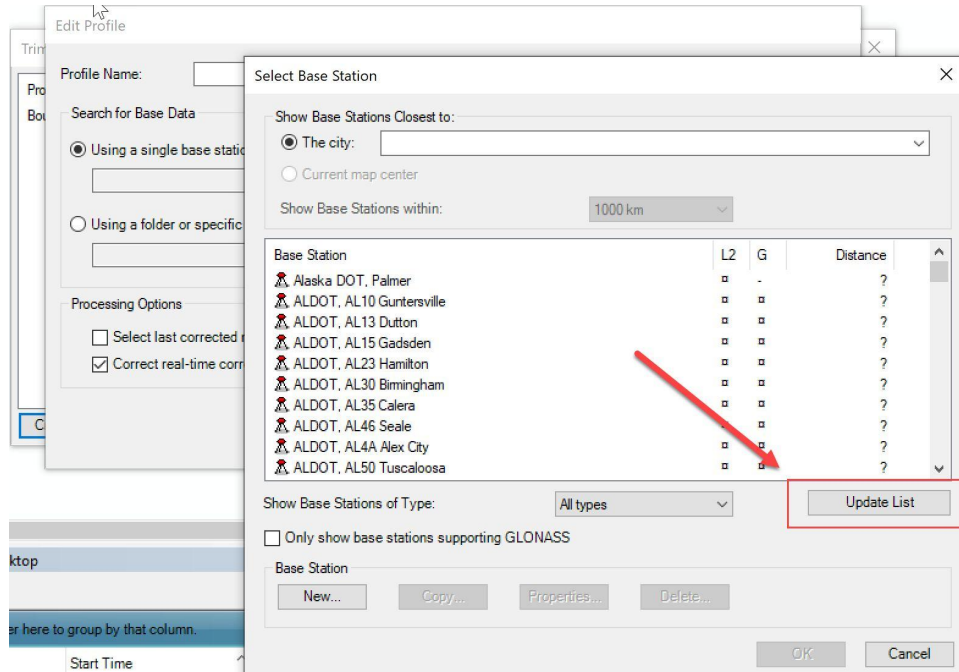
- **Trimble GPS Pathfinder Office**

- When you select your base within the Differential Correction Wizard, click the Update List button.



- **Trimble Positions Desktop add-in**

- When you set up a Processing Profile within the Trimble Positions Administration Window, click the Update List button. Alternatively, you can use the *Manage Base Stations* action in the Desktop Configuration application installed with Trimble Positions.



For more information

For more information contact your local Trimble Distribution Partner.